

DUPLEX

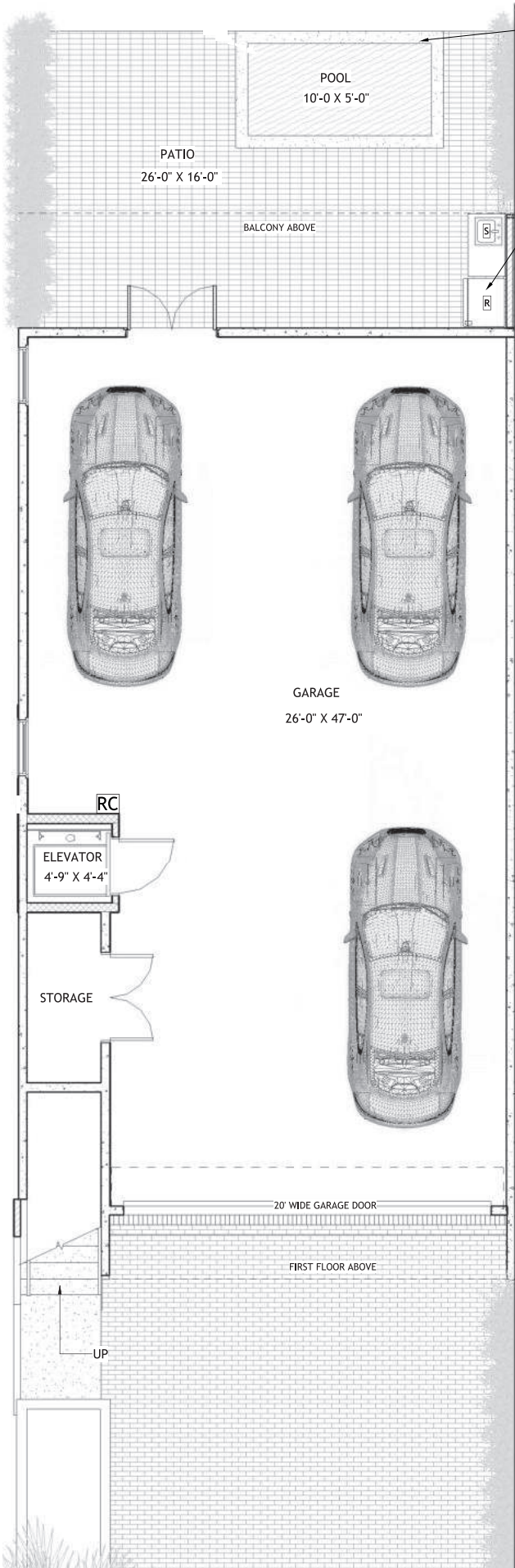
3,280 SQF LIVABLE / 4,481 SQF TOTAL



OceanGlass
Residences and Marina

Left - 1, 3, 5, 7, 9, 11 / Right - 2, 4, 6, 8, 10, 12



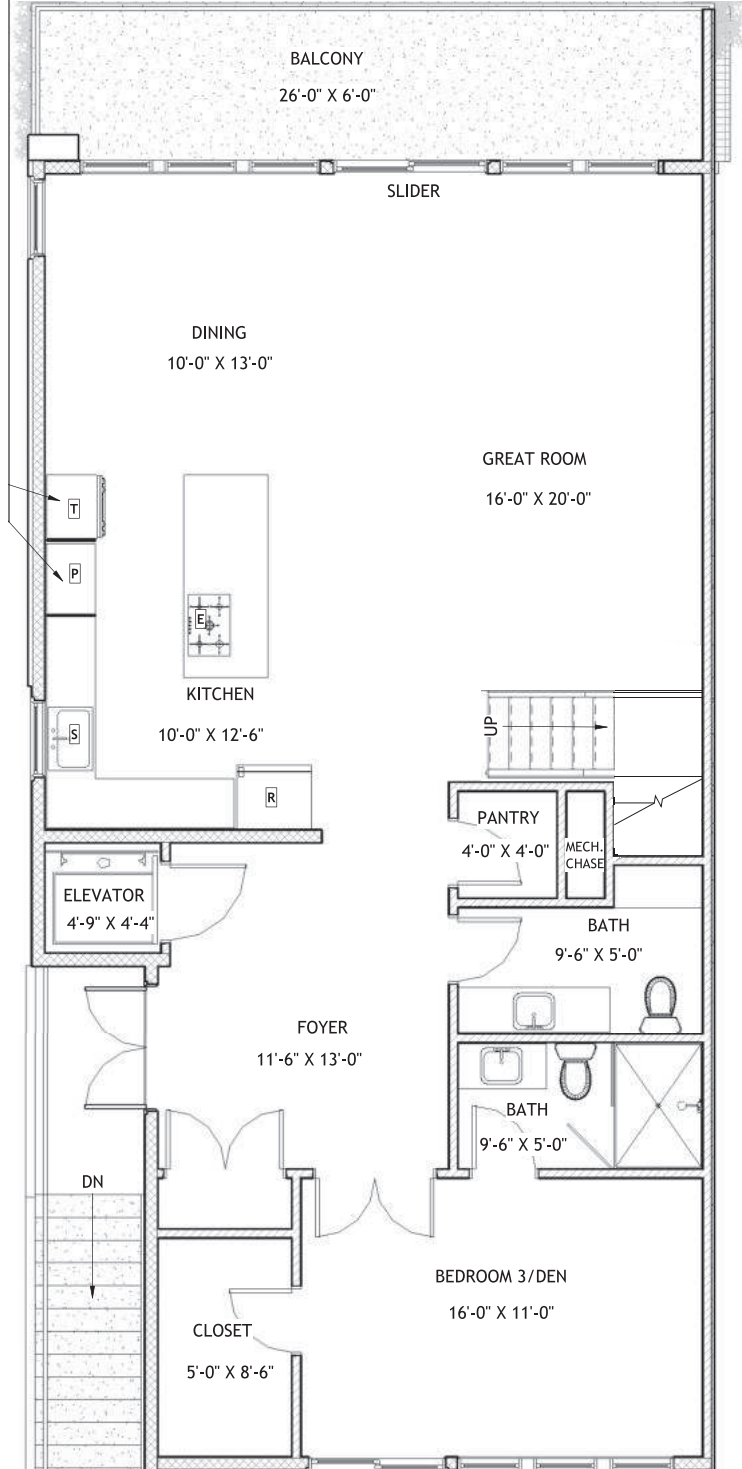


OPTIONAL

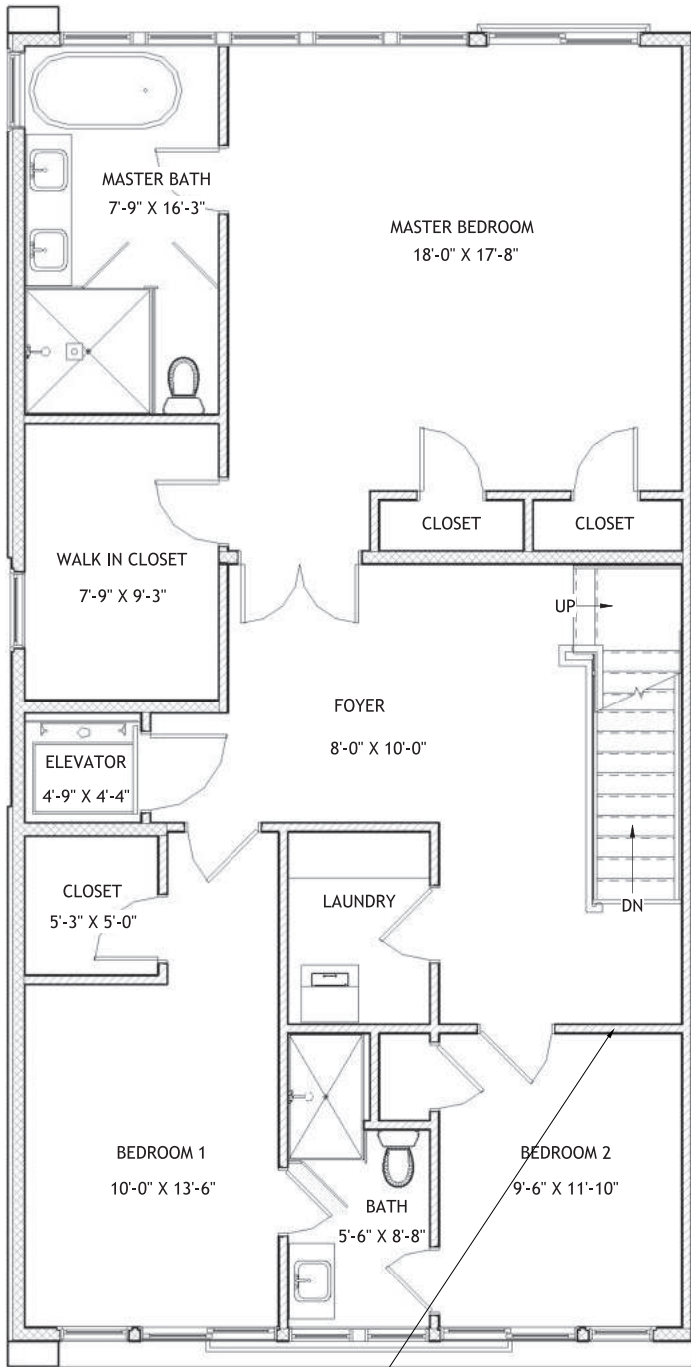
PACKAGE TYPE "M" 5X10 OR PACKAGE TYPE "N" 8X15 / ADDITIONAL POOL
Pool Equipment, Stone Finishes

PACKAGE TYPE "J" / BACKYARD KITCHENETTE
Sink, Cabinetry, CounterTop, Refrigerator

PACKAGE TYPE "C" AND TYPE "D" / UPSCALE KITCHEN
"C" / Kitchen Aid; "D" / Tower Oven, Additional Pantry

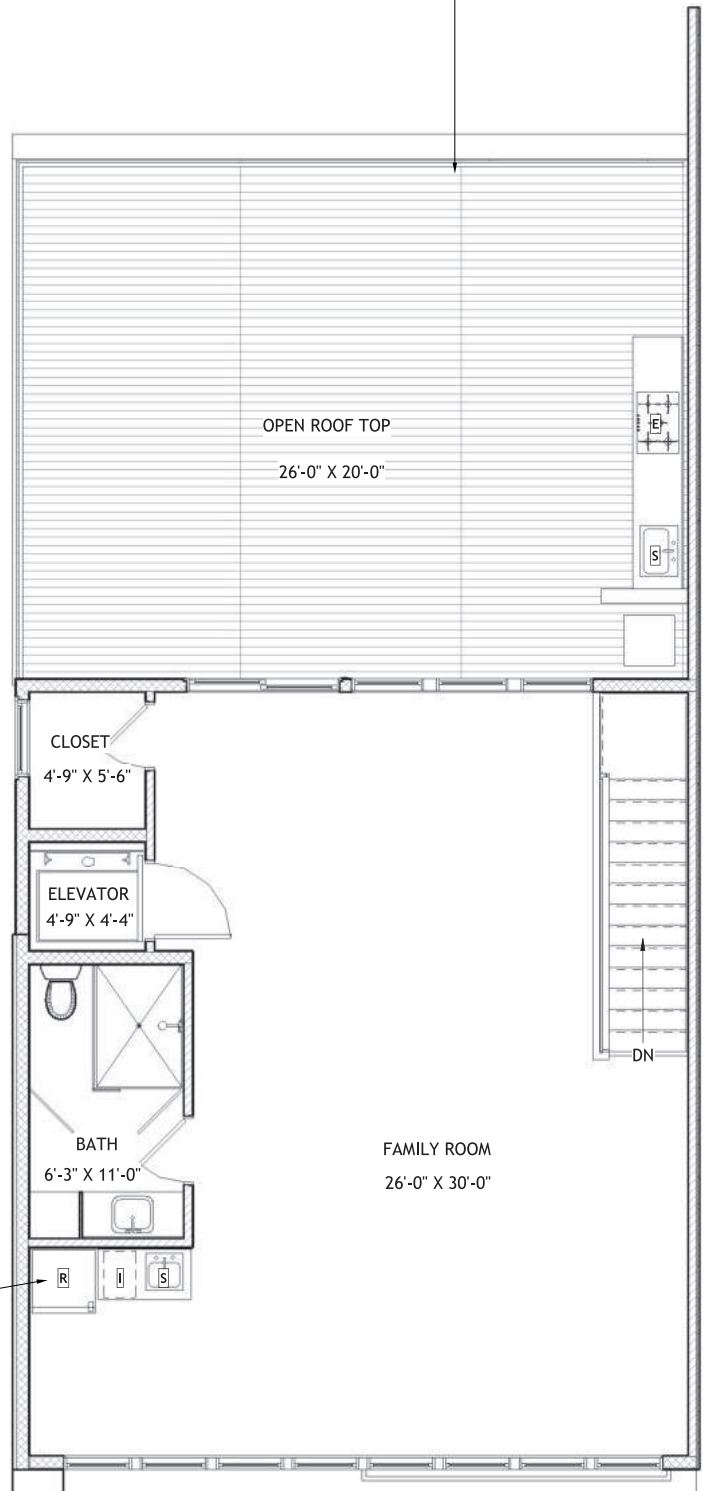


<u>LEGEND</u>			
	ELECTRIC RANGE		PANTRY
	REFRIGERATOR		ICE MAKER
	TOWER OVEN		SINK
	RAPID CHARGER		(OPTIONAL)



OPTIONAL

PACKAGE "H" / ROOFTOP UPGRADE
 Additional Railing, Extended decking, Outdoor Kitchen



OPTIONAL

PACKAGE TYPE "T" / OFFICE PACKAGE
 Remove Wall Between Bedroom 2 and Landing

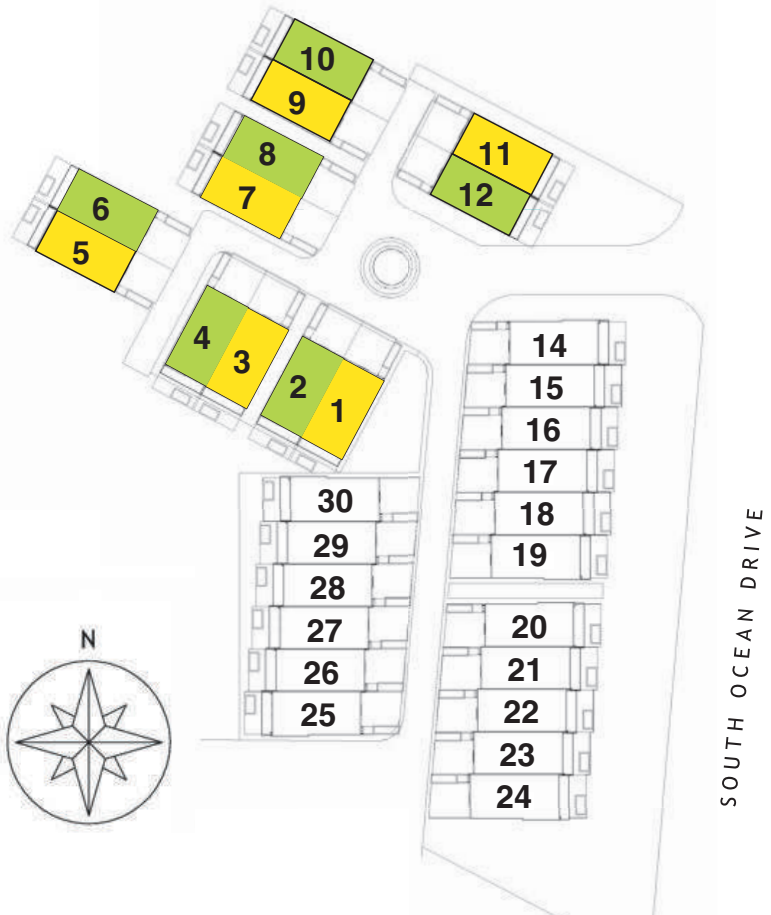
PACKAGE TYPE "I" / ENTERTAINMENT BAR & KITCHENETTE
 Sink, Cabinetry, CounterTop, Refrigerator

TOTAL: 4,481 SQF
 LIVABLE: 3,280 SQF

DUPLEX

■ Right - 2, 4, 6, 8, 10, 12

■ Left - 1, 3, 5, 7, 9, 11



All information provided for herein is an approximation and subject to change at any time by the Developer. The developer reserves the right to make modifications, changes or additions to all plans, designs, renderings, materials, layouts, amenities, common and limited common areas depicted in this brochure. Developer/Builder may substitute products, materials or items as they deems appropriate from time to time. All drawings are artist's conception and shall not be relied upon as to what the completed project shall look like. In deciding to purchase a home, purchaser agree to rely only on the final contract document and not any information contained herein. Site plan is for illustrative purpose only. Building locations, roadways, landscaping and parking configuration may change as construction progresses.