

# TOWNHOUSE CENTER

2,970 SQF LIVABLE / 4,198 SQF TOTAL

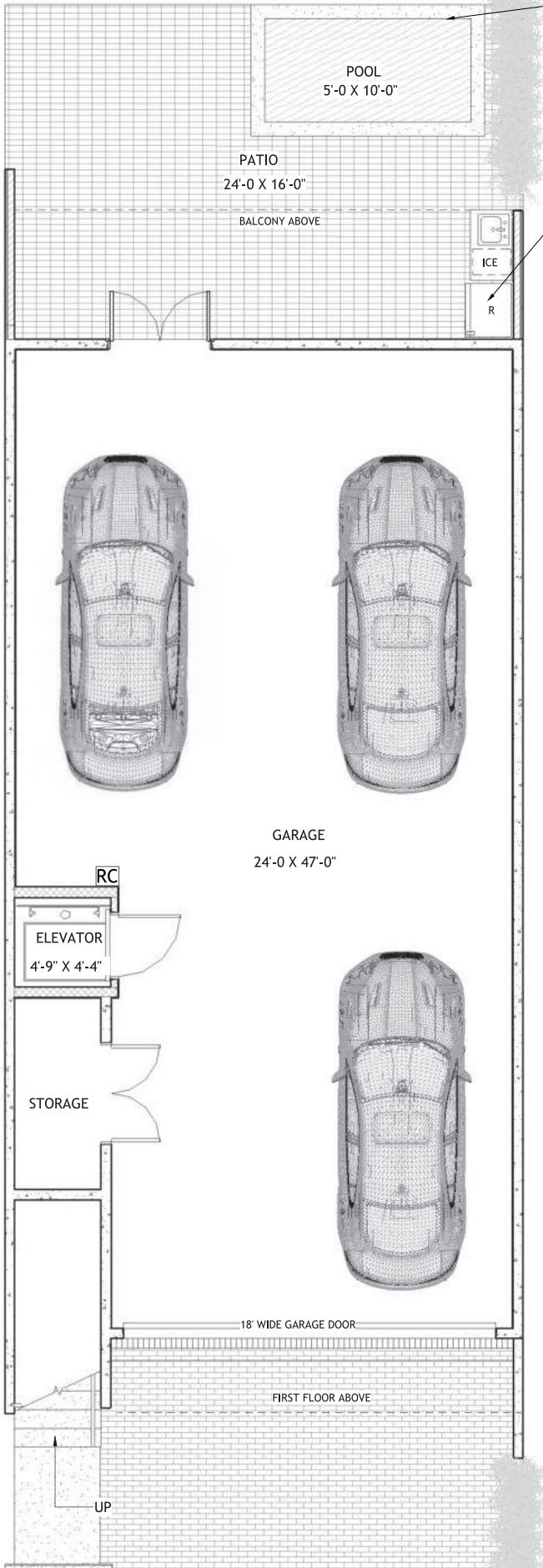


## OceanGlass

Residences and Marina

Left - 15, 17, 22, 26, 28 / Right - 16, 18, 21, 23, 27, 29



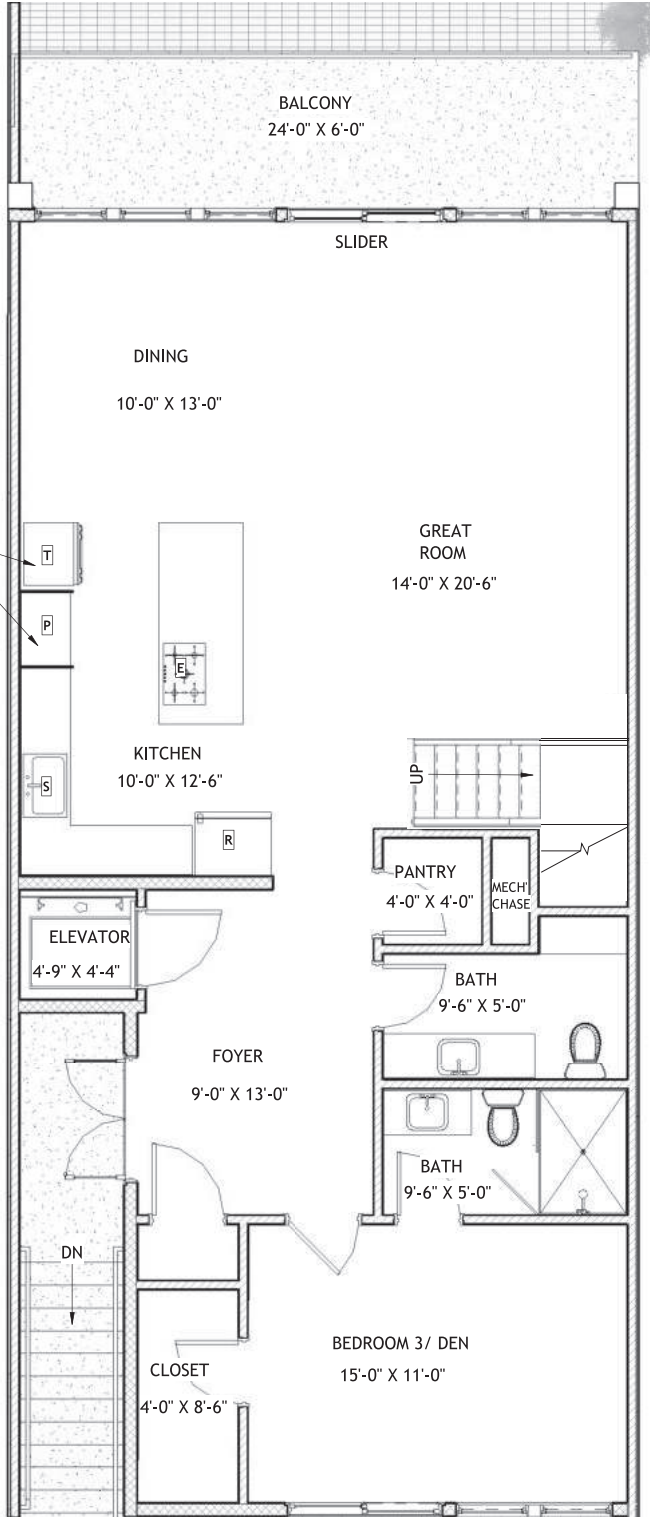


OPTIONAL

PACKAGE TYPE "M" 5X10 OR PACKAGE TYPE "N" 8X15 / ADDITIONAL POOL Equipment, Stone Finishes

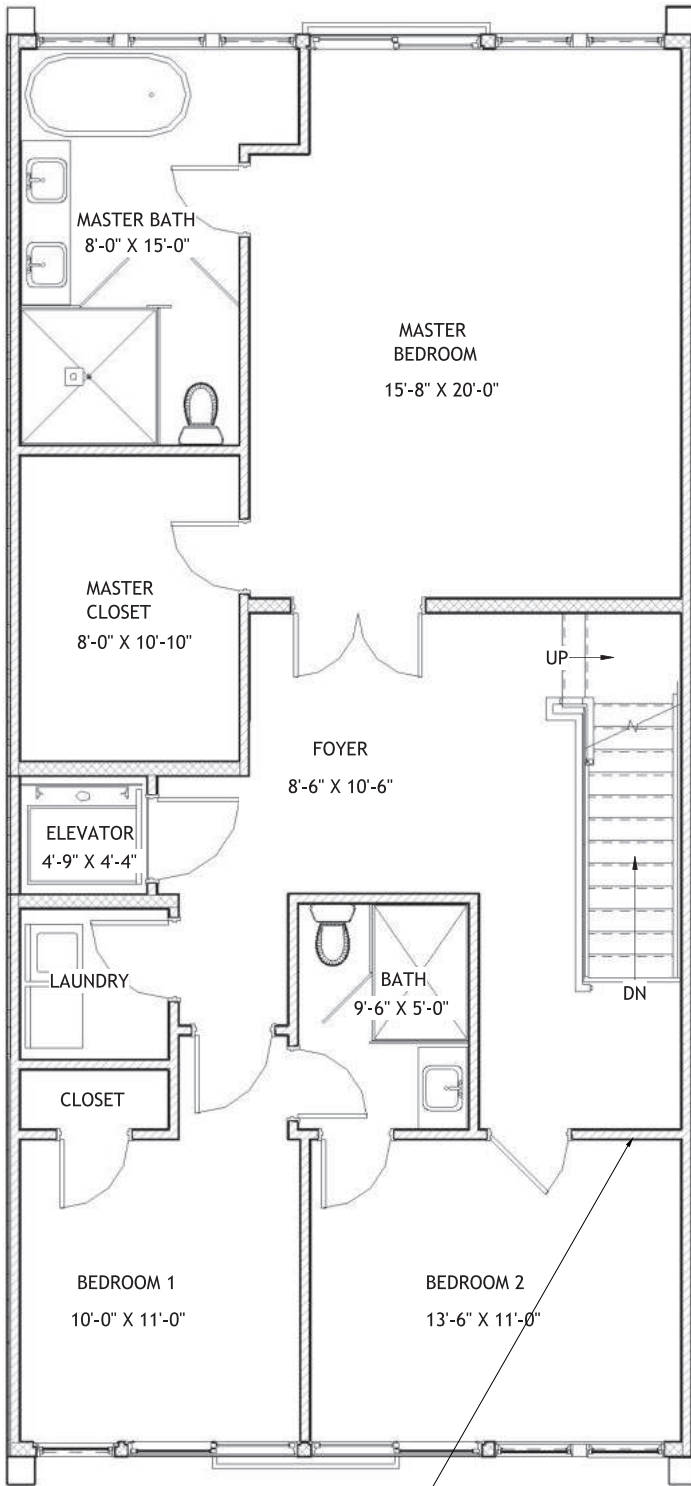
PACKAGE TYPE "J" / BACKYARD KITCHENETTE Sink, Cabinetry, CounterTop, Refrigerator

PACKAGE TYPE "C" AND TYPE "D" / UPSCALE KITCHEN "C" / Kitchen Aid; "D" / Tower Oven, Additional Pantry



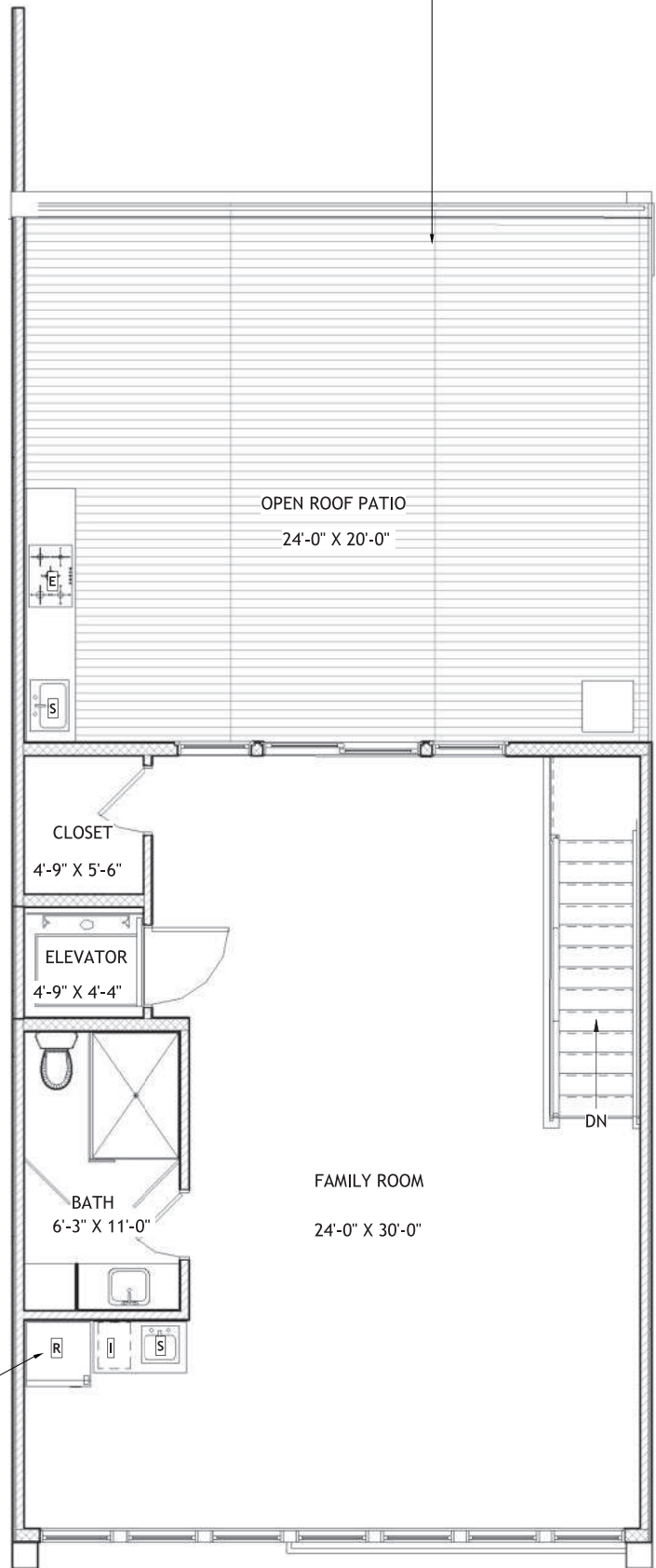
LEGEND

- |                |            |           |                     |
|----------------|------------|-----------|---------------------|
| ELECTRIC RANGE | PANTRY     | ICE MAKER | (OPTIONAL)          |
| REFRIGERATOR   | TOWER OVEN | SINK      | RC<br>RAPID CHARGER |



OPTIONAL

PACKAGE TYPE "H" / ROOFTOP UPGRADE  
 Additional Railing, Extended decking, Outdoor Kitchen,



OPTIONAL

PACKAGE TYPE "T" / OFFICE PACKAGE  
 Remove Wall Between Bedroom 2 and Landing

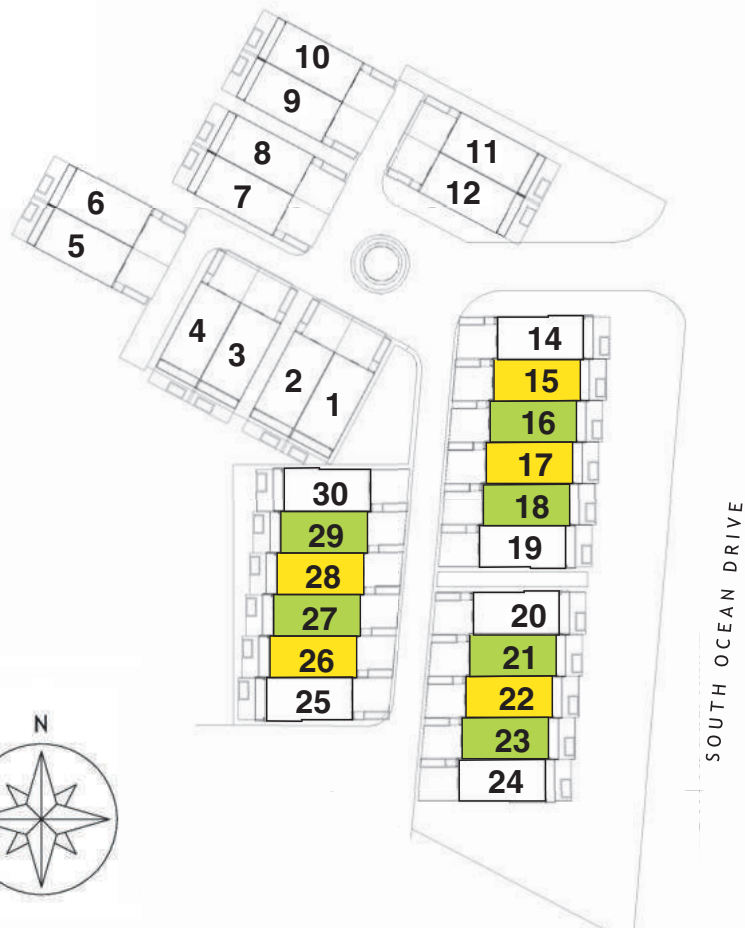
PACKAGE TYPE "I" / ENTERTAINMENT BAR & KITCHENETTE  
 Sink, Cabinetry, CounterTop, Refrigerator

TOTAL: 4,198 SQF  
 LIVABLE: 2,970 SQF

## TOWNHOUSE CENTER

■ Right - 16, 18, 21, 23, 27, 29

■ Left - 15, 17, 22, 26, 28



All information provided for herein is an approximation and subject to change at any time by the Developer. The developer reserves the right to make modifications, changes or additions to all plans, designs, renderings, materials, layouts, amenities, common and limited common areas depicted in this brochure. Developer/Builder may substitute products, materials or items as they deems appropriate from time to time. All drawings are artist's conception and shall not be relied upon as to what the completed project shall look like. In deciding to purchase a home, purchaser agree to rely only on the final contract document and not any information contained herein. Site plan is for illustrative purpose only. Building locations, roadways, landscaping and parking configuration may change as construction progresses.